

Stainless steel (316 LVM alloy) Trauma Screws consist of the following self-tapping screws:

- 1 - Cortical screws.
- 2 - Cancellous screws.
- 3 - Locking screws.
- 4 - Cannulated screws.

TRAUMA IMPLANTS

S c r e w s



Cortical screws

Stainless steel cortical screws are in accordance with ISO 5832-1. These screws are full thread and available in 2 sizes:

- Ø 3.5 mm, available in 16 lengths (10-40 mm).
- Ø 4.5 mm, available in 26 lengths (14-70 mm).

Cancellous screws

Cancellous screws are available in full thread and partial thread versions:

- Ø 6.5 mm, 16 mm thread, available in 14 lengths (length 25-90 mm).
- Ø 6.5 mm, 32 mm thread, available in 14 lengths (length 45-110 mm).
- Ø 6.5 mm, full threads, available in 19 lengths (20-110 mm).

Locking screws

Stainless steel Locking screws are in accordance with ISO 5832-1. These screws are available in 2 diameters:

- Ø 3.5 mm, available in 16 lengths (16-70 mm).
- Ø 5 mm, available in 18 lengths (20-54 mm).

Cannulated screws

Stainless steel Cannulated screws are in accordance with ISO 5832-1. These screws are available in

16 mm and 32 mm thread.

- Ø 7 mm, 16 mm thread, available in 4 lengths (length 50-65 mm).
- Ø 7 mm, 32 mm thread, available in 4 lengths (length 50-65 mm).

Standard test

ASTM F 543

Standard Specification and Test Methods for Metallic Medical Bone Screws.

TRAUMA IMPLANTS PLATES

DCP (Dynamic Compression Plate): DCP plate is a metallic plate used in orthopedics for internal fixation of bone, typically after fractures. As the name implies, it is designed to exert dynamic pressure between the bone fragments to be transfixed. Dynamic compression is achieved either by attaching a tension device to a plate or by using a special dynamic compression plate.

- Placement of screw in neutral position without danger of distraction.
- All holes permit compression.
- Usage of two load screws in main fragment.
- Compression of several fragments individually in comminuted fractures.

DCP 3.5 Narrow

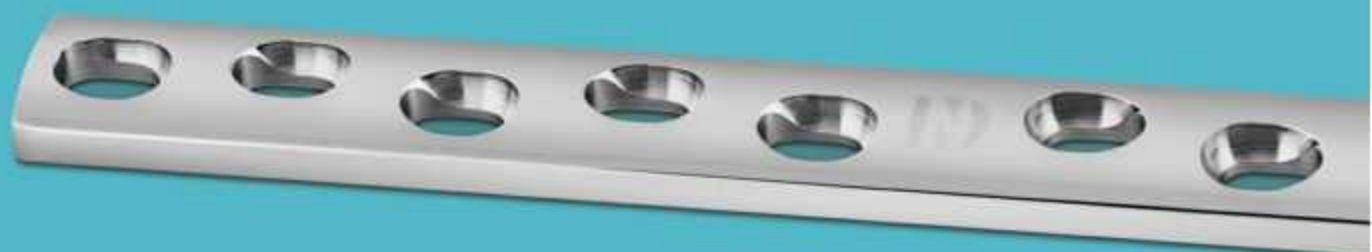
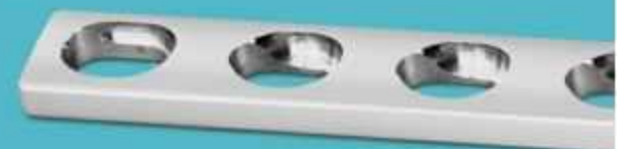
HOLES	2	3	4	5	6	7	8	9	10	12	14
LENGTH (mm)	25	37	49	61	73	85	97	109	121	145	169

DCP 4.5 Narrow

HOLES	2	3	4	5	6	7	8	9	10	11	12	13	14	15	16
LENGTH (mm)	39	55	71	87	103	119	135	151	167	183	199	215	231	247	263

DCP 4.5 Broad

HOLES	4	5	6	7	8	9	10	11	12	13	14	15	16	17	18
LENGTH (mm)	71	87	103	119	135	151	167	183	199	215	231	247	263	279	295



LCP (Locking Compression Plate): LCP plate is a new development of the screw-plate system that allows the combination of standard plate technology and locking screws with angular stability. The special characteristics of the LCP are :

- Angular stability in combination with interfragmentary compression.
- In addition to conventional indications, the LCP is particularly well suited for the treatment of juxta-articular fractures and for osteoporotic bone, as well as for the use of percutaneous techniques.
- Incorporating features of LC-DCP (Limited Contact DCP).
- Uses non-locking and/or locking head screws (LHS).

LCP Plate is available in 2 narrow sizes and 1 broad size.

LCP 3.5 Narrow

HOLES	2	3	4	5	6	7	8	9	10	11	12
LENGTH (mm)	33	46	59	72	98	85	111	124	137	150	163

LCP 4.5 Narrow

HOLES	2	3	4	5	6	7	8	9	10	11	12	13	14	15	16
LENGTH (mm)	34	52	70	88	106	124	142	160	178	196	214	232	250	268	286

LCP 4.5 Broad

HOLES	2	3	4	5	6	7	8	9	10	11	12	13	14	15	16
LENGTH (mm)	34	52	70	88	106	124	142	160	178	196	214	232	250	268	286

Standard test

ASTM F 382
Standard Specification and Test Method for Metallic Bone Plates.

